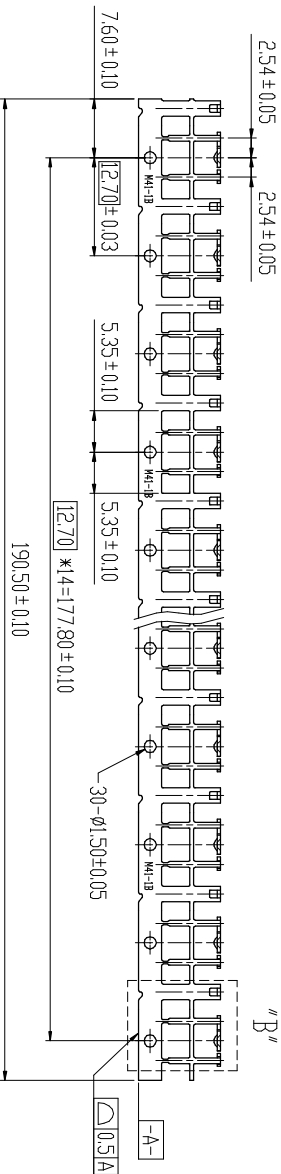
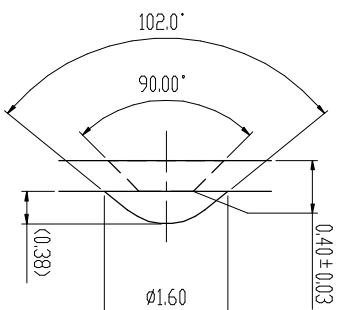
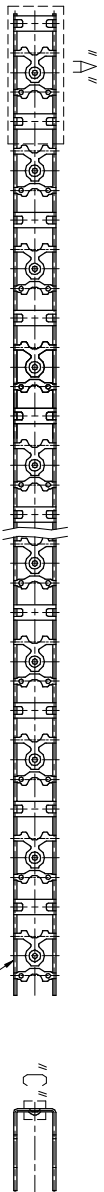
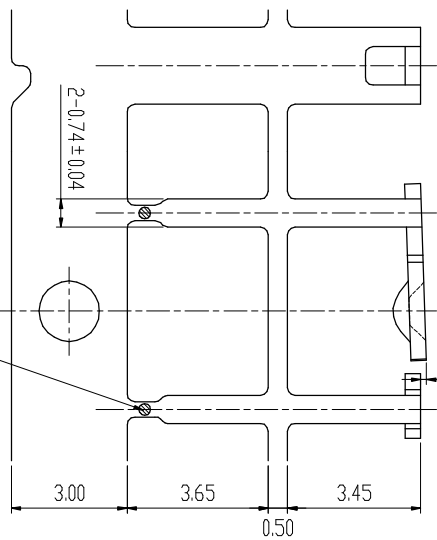
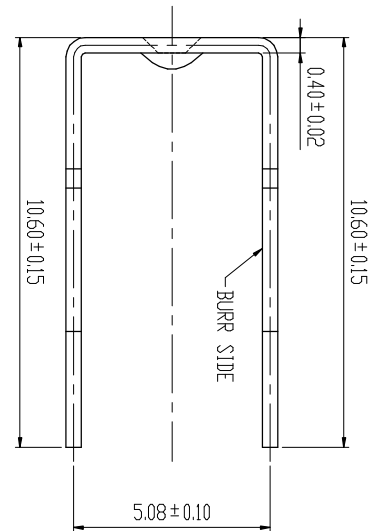
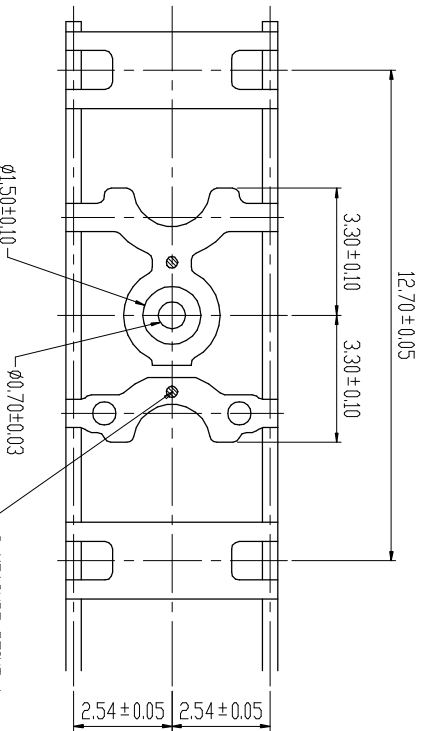


UNPLATING/REEL	PLATING	PART NO.	DESCRIPTION			PIECE
A1200000A	A1260015A	A1260U15A	UNDERPLATING	A Point	B Point	15PIN
			CU 20~30μ"	AG 80μ"	AG 40μ"	

REVISION			
REV	DESCRIPTION	BY	DATE
A	NEW DRAWING	J.S.SHEU	02/13/09
B	EN1011-001	Ted	11/04/10



"C" S=10/1



"B" S=5/1

"A" S=5/1

- NOTE:
1. MATERIAL: 0.40±0.02 THICK C2680R 1/2H.
 2. PLATING OF NONE MEASURING POINT FOR TABLE : AG 30μ" MIN.
 3. RADIUS: 0.30 MAX. ON ALL SHARP CORNERS UNLESS OTHERWISE SPECIFIED.
 4. BURR: 0.03 MAX. UNLESS OTHERWISE SPECIFIED.
 5. CAN NOT BE DISCORDER AFTER BY 170° BAKING FOR 1.5 HOURS.

ANGLES 0°±2°'		DR	DATE	MAT'L
MM	Ted	11/04/10'	SEE NOTE 1	
0.0±0.13	CHK	11/04/10'	FINISH	
0.00±0.05	ENGR		SEE PART NO. TABLE	
0.000±0.03	APPD		DWG.NO.	M0346

CHAIN PRECISION INDUSTRIAL CO., LTD.

DWG TYPE	TITLE	SCALE	SIZE	PART NO.	REV
C	2041-M41-1BU	1:1	A4	E03046-A126XU15A	B

SHT 1 OF 2