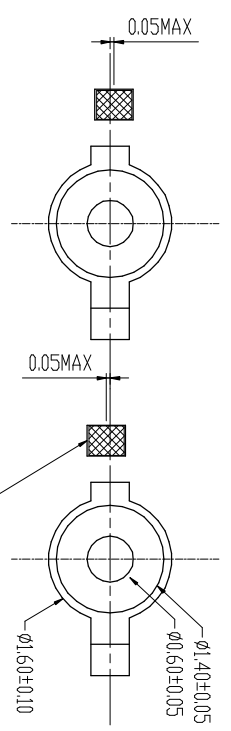
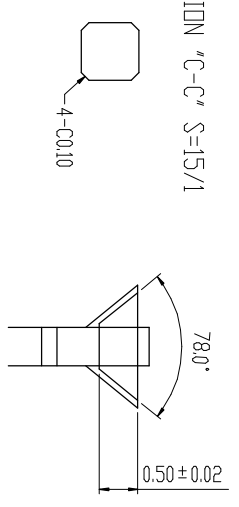


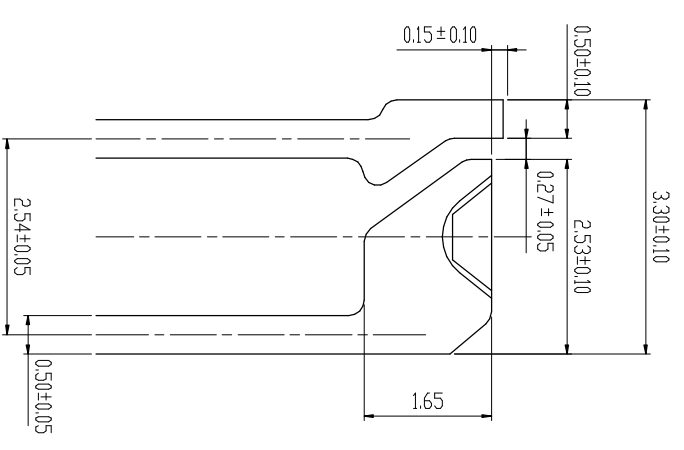
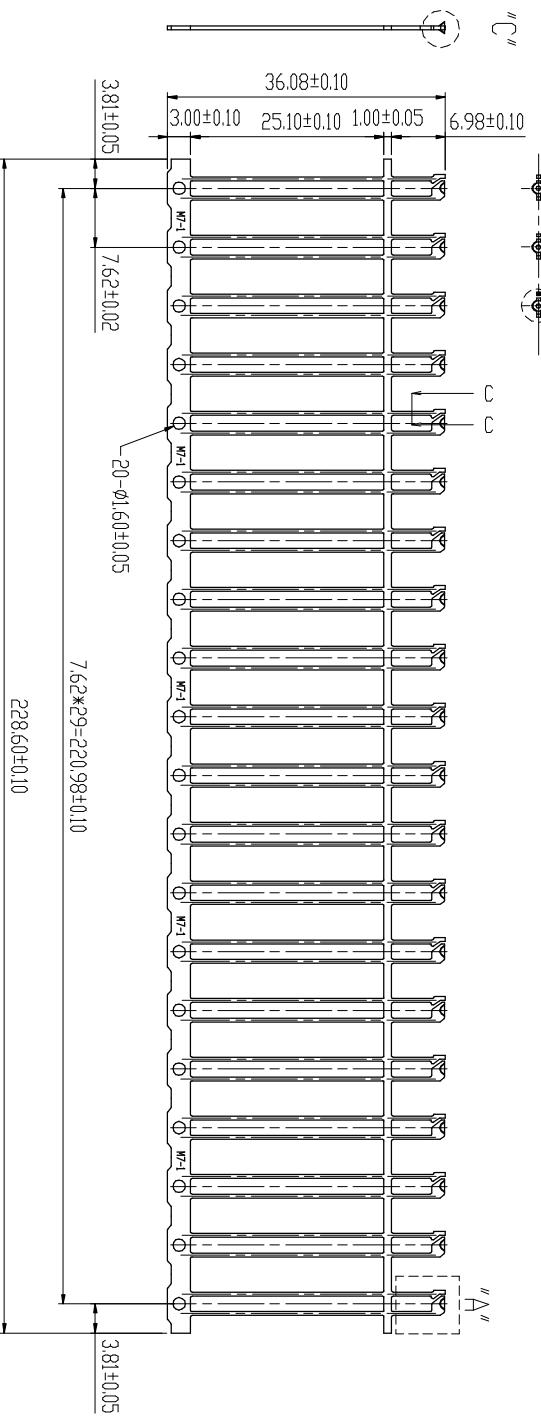
SCATION "C-C" S=15/1

"C" S=10/1

"B" S=10/1



REVISION			
REV	DESCRIPTION	BY	DATE
A	NEW DRAWING	MS.SU	10/24/03
B	MODIFY P/N	J.S.SHEU	01/02/07
C	ECN.0706-008	J.S.SHEU	06/16/07



"A" S=10/1

NOTE:

1. MATERIAL: 0.50±0.025 THICK SPCC-SH.
2. BURR: 0.05MAX. UNLESS OTHERWISE SPECIFIED.
3. RADIUS: 0.30 MAX. ON ALL SHARP CORNERS UNLESS OTHERWISE SPECIFIED.
4. BOW: NOT TO EXCEED 0.50 IN A 30 FRAME STRIP.
5. CROSS BOW: NOT TO EXCEED 0.20 TO 36.08 WIDTH.
6. TWIST: 0.50 MAX. IN A FRAME STRIP.
7. CAMBER: LESS THAN 0.10 WHEN MEASURE DYER 30 POSITIONS.
8. TWISTING ANGLE: ±2° MAX. OF THE BOWL.
9. TOLERANCE: IS ±0.10 UNLESS OTHERWISE SPECIFIED.

F180000A	UNPLATING REEL
F186000A	AG±80u"/F50u" REEL
F186020A	AG±80u"/F50u".30PIN

ANGLES 0°±20°

M/V

DR

J.S.SHEU

DATE

06/16/07

MAT'L

SEE NOTE 1

FINISH

SEE NOTE 2

CHAIN PRECISION INDUSTRIAL CO., LTD.

TITLE

2003M7-1

REV C



0.00±0.05

ENGR

J.S.SHEU

06/16/07

DWG. NO.

M0344

SCALE

1:1

SIZE

A4