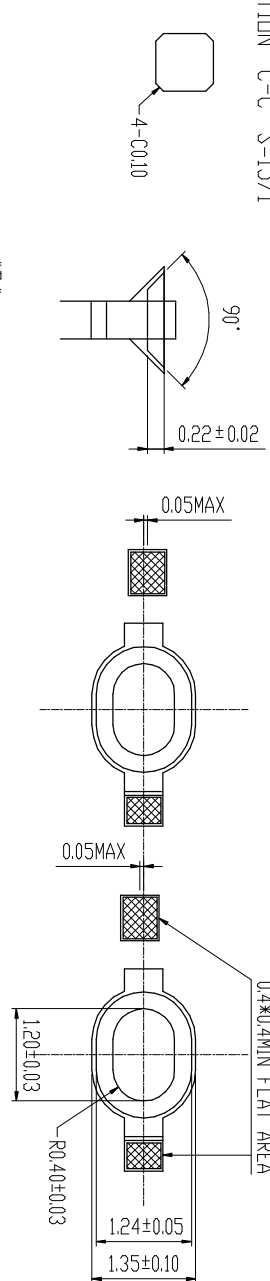
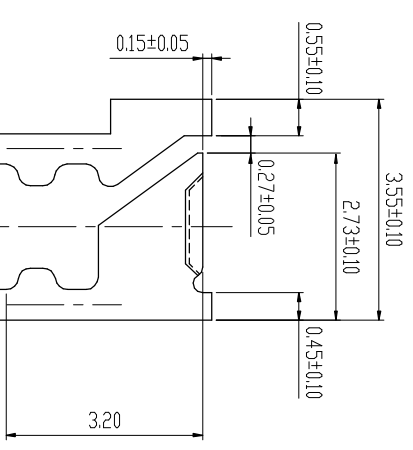
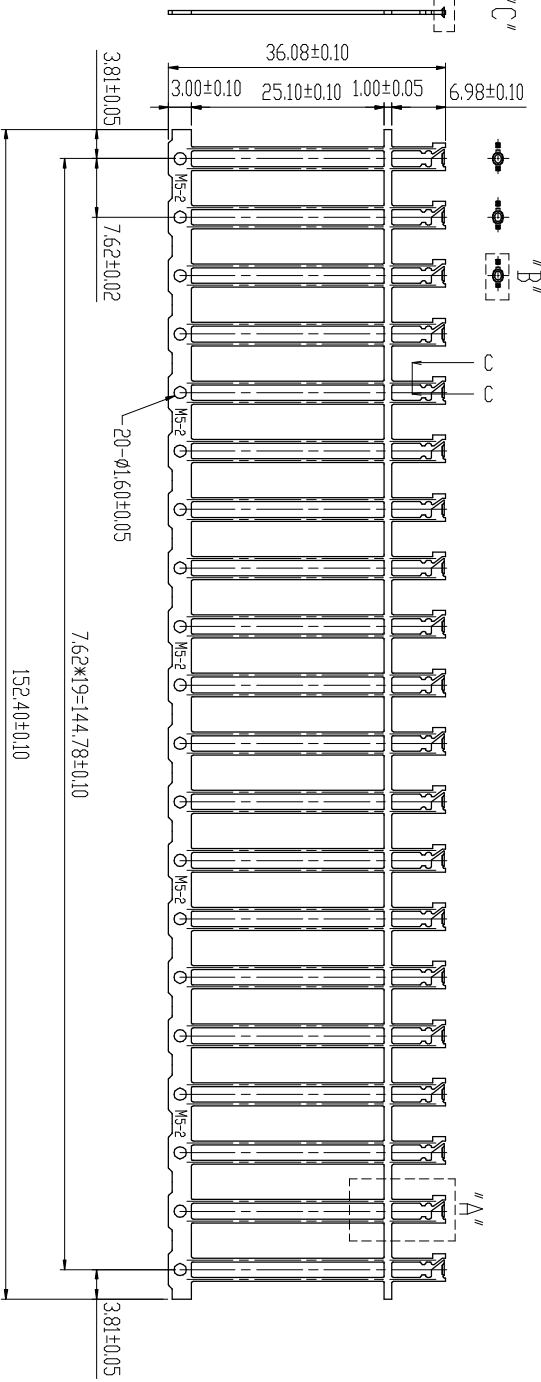


A B C D E F G H I

SCANTION "C-C" S=15/1  
 "C" S=10/1



REVISION			
REV	DESCRIPTION	BY	DATE
B	NEW DRAWING	J.S.SHEU	11/16/06'
C	MODIFY P/N	J.S.SHEU	01/02/07'



NOTE:  
 1. MATERIAL: 0.50±0.025 THICK SPC-SI.  
 2. BURR: 0.05MAX. UNLESS OTHERWISE SPECIFIED.  
 3. RADIUS: 0.30 MAX. ON ALL SHARP CORNERS UNLESS OTHERWISE SPECIFIED.  
 4. BW: NOT TO EXCEED 0.50 IN A 20 FRAME STRIP.  
 5. CROSS BW: NOT TO EXCEED 0.20 TO 36.08 WIDTH.  
 6. TWIST: 0.50 MAX. IN A FRAME STRIP.  
 7. CAMBER: LESS THAN 0.10 WHEN MEASURE OVER 20 POSITIONS.  
 8. TWISTING ANGLE: ±2° MAX. OF THE BWL.  
 9. TOLERANCE: IS ±0.10 UNLESS OTHERWISE SPECIFIED.

D180000A	UNPLATING REEL
D186000A	AG±110µ"/T50µ" REEL
D186020A	AG±110µ"/T50µ" 20PIN

ANGLES 0°±20'	MM	DR	DATE	MAT'L
		J.S.SHEU	01/02/07'	SEE NOTE 1
0.0±0.13		CHK		FINISH
0.00±0.05		ENGR	01/02/07'	SEE NOTE 2
0.000±0.03		APPD		DWG. NO. M0344

CHAIN PRECISION INDUSTRIAL CO., LTD.

TITLE	2003M5-2	REV	C
SCALE	1:1	PART. NO.	E0344-D18XXXXA
SIZE	A4		SHT 1 OF 1

A B C D E F G H I